

Dufour Yachts announces two new models 2019



Dufour Yachts confirms the great development dynamic with the launch of two new Dufour Grand Large units for year 2019.

Dufour 390 Grand Large



Dufour 430 Grand Large



Respectively positioned on 39 feet and 43 feet segments, the D390 and D430 Grand Large complete, without replacing, the actual models of the Dufour Grand Large range, composed by D310 – D360 – D382 – **D390** – D412 – **D430** – D460 – D520.

The D390 et D430 Grand Large integrate the range thanks to the complementary and versatile offer of their interior layouts, perfectly adapted to the owners market as well as to the charter market.

The Dufour 390 et 430 Grand Large World-Premiere will be in Yachting de Cannes 2018.

**New
design**

Hull design – wink to Exclusive range

The D390 et D430 present the next generation of Dufour Grand Large hulls.

The signature of Umberto Felci, with the recent innovations inspired from the Dufour Exclusive range, is distinguished by the bulwarks integration and the magnificent hull recess.

Furthermore, the important front volume and modern aft shines lines make these hulls more spacious and performant.



Hull bulwarks inspired by Dufour Exclusive

New fixed delphinere integration with optimized chain scroll

Hull shape based on most advanced CFD analysis

Smooth hull shines

Modern hull signature with elegant recess

Hull development

The research that is at the base of the new Dufour 390 Grand Large and Dufour 430 Grand Large hulls has led to optimizing the ratio between the maximum navigation efficiency and the need to offer ever greater and better exploitable interior volumes. The new hull, wide and flat, which finds its maximum expression downwind, is however very performing even upwind, thanks above all to the new “stern to bow” hull volumes development.



The studies made has brought us to change the height, the development and the shape of the hard chine that in the new hulls is slightly lower, straighter towards the stern and also slightly rounded.

This type of section, which run more constantly till close to the bow, increases the overall stability and reduces the negative “nose down” effect, typical of wide hulls and intrinsically linked to high heel angles.

This type of hull also offers greater interior volumes, especially in the forward area, without having negative repercussions on the upright performance, being almost completely developed on hull topsides.

Deck design – complete modernization

The new deck design is a prowess of balance between stunning aesthetic, correct dimension of each area and ingenuity to integrate new functions. The roof proportions have evolved in comparison with Grand Large predecessors and now offer more interior space while conserving pleasant sidedeck width, as distinction value of Dufour sail yachts.





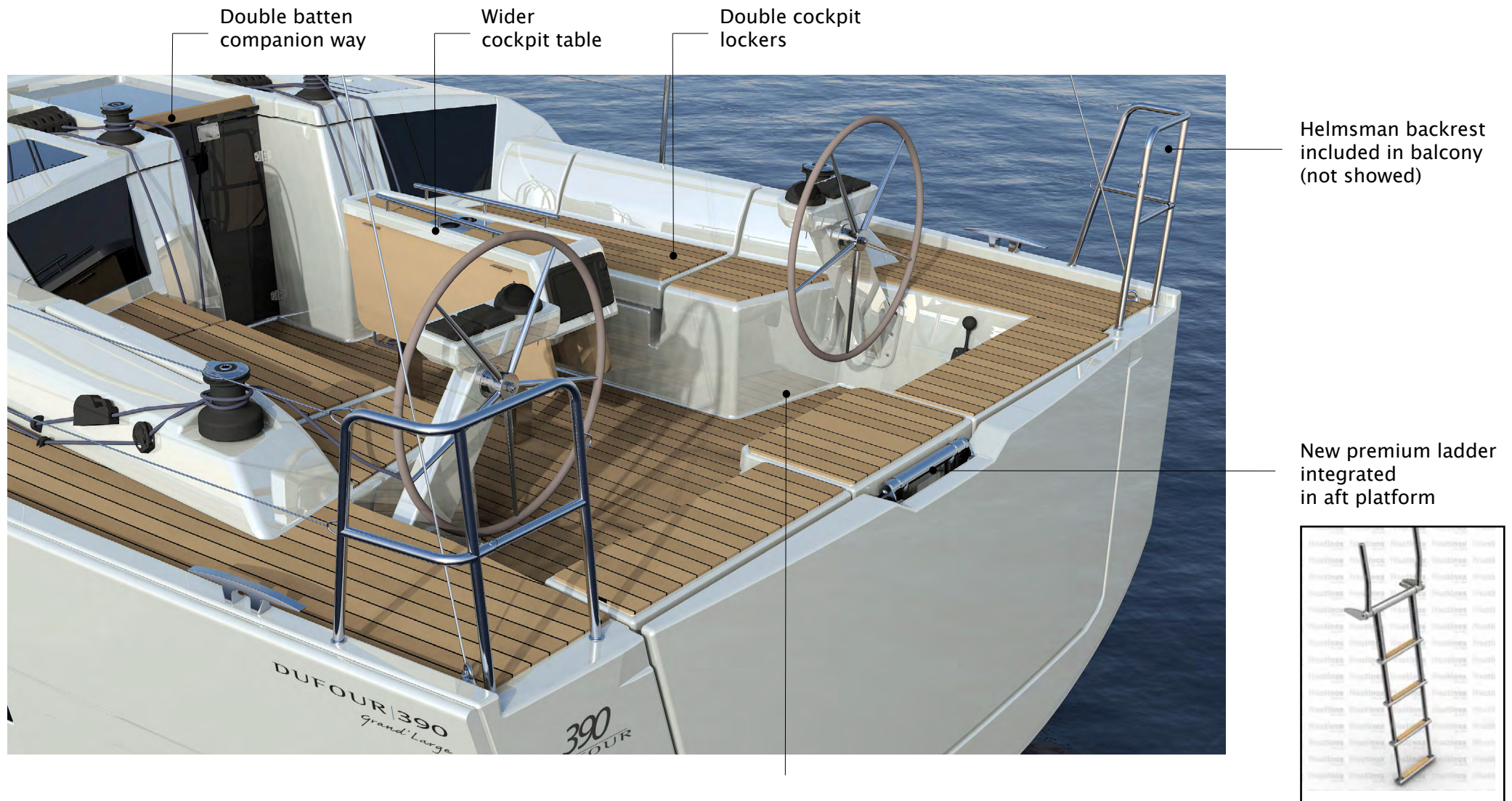
390 Grand Large

Exterior Equipment

Exterior equipment – increasing standard

The D390 et D430 show a consistent evolution of their standard equipments.

Among the novelties, we distinguish the elegant pod consoles, the sublime ladder integrated in the aft platform, the double batten companion way and the led dressing all around the deck.





390 Grand Large

Whole cockpit and deck include x16 led courtesy lights that provide great style and comfort at night

Interiors

D390 Grand Large - Layouts



3 cabins / 2 heads



2 cabins / 2 heads



3 cabins / 3 heads

D390 Grand Large – Interiors



D430 Grand Large - Layouts



3 cabins / 2 heads

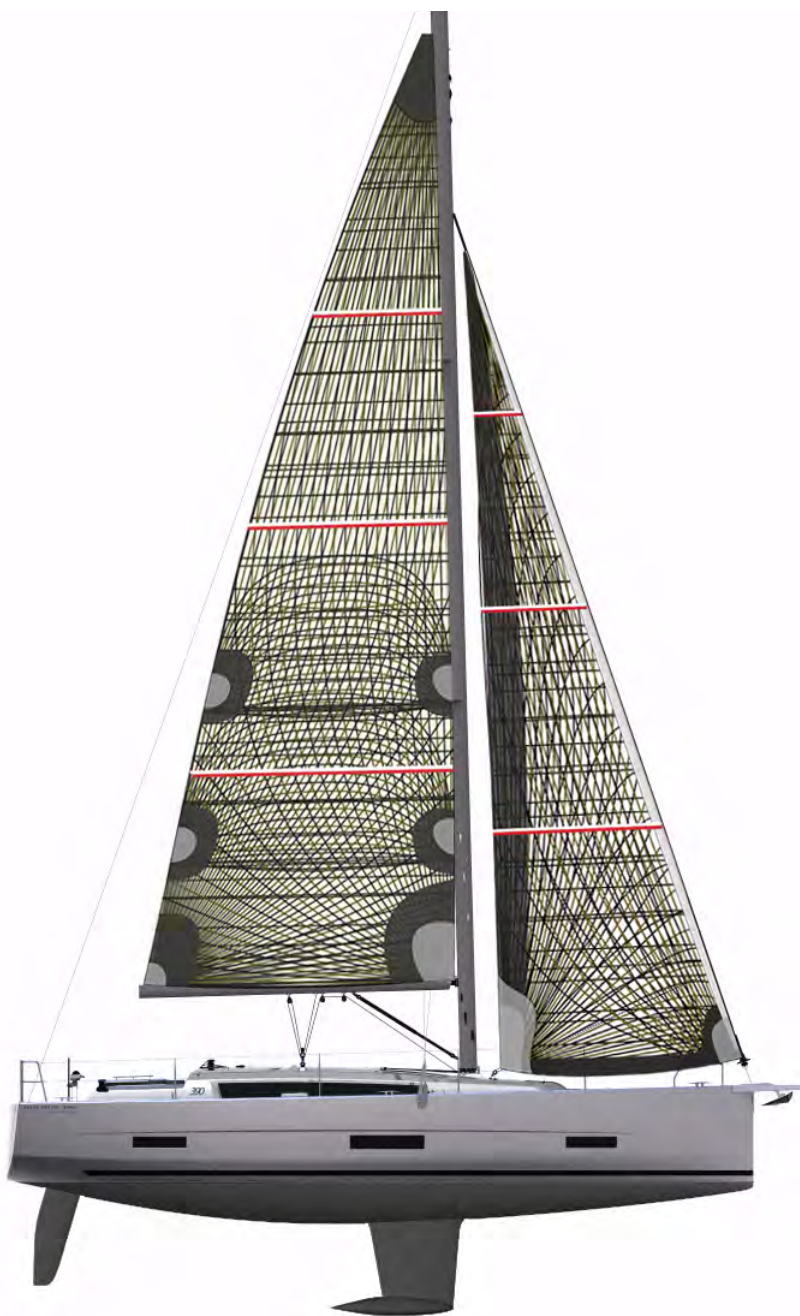


4 cabins / 2 heads

D430 Grand Large – Interiors



Specifications



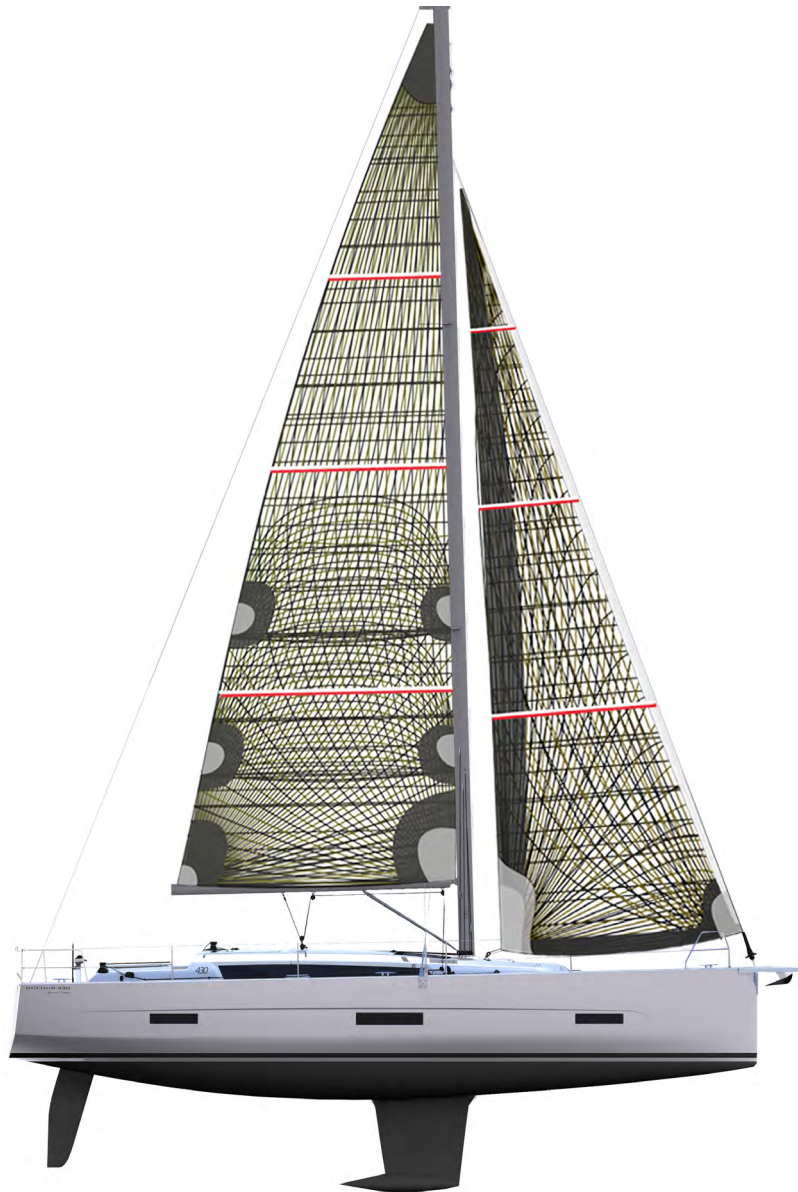
390

DUFOUR

GRAND LARGE

General specifications

| | |
|------------------------|----------------------|
| Architect | Felci Yacht Design |
| LOA | 11,93 m |
| Hull lenght | 11,19 m |
| Waterline lenght | 10,50 m |
| Beam | 3,99 m |
| Draft | 1,95 m (1,75 m opt.) |
| Displacement | 7491 kg |
| Engine | 30 cv (40 cv opt.) |
| Fuel capacity | 200 L |
| Water capacity | 380 L |
| Boiler capacity | 40 L |
| Total sail area upwind | 71 m ² |
| Main sail | 40 m ² |
| Genoa | 31 m ² |



430

DUFOUR

GRAND LARGE

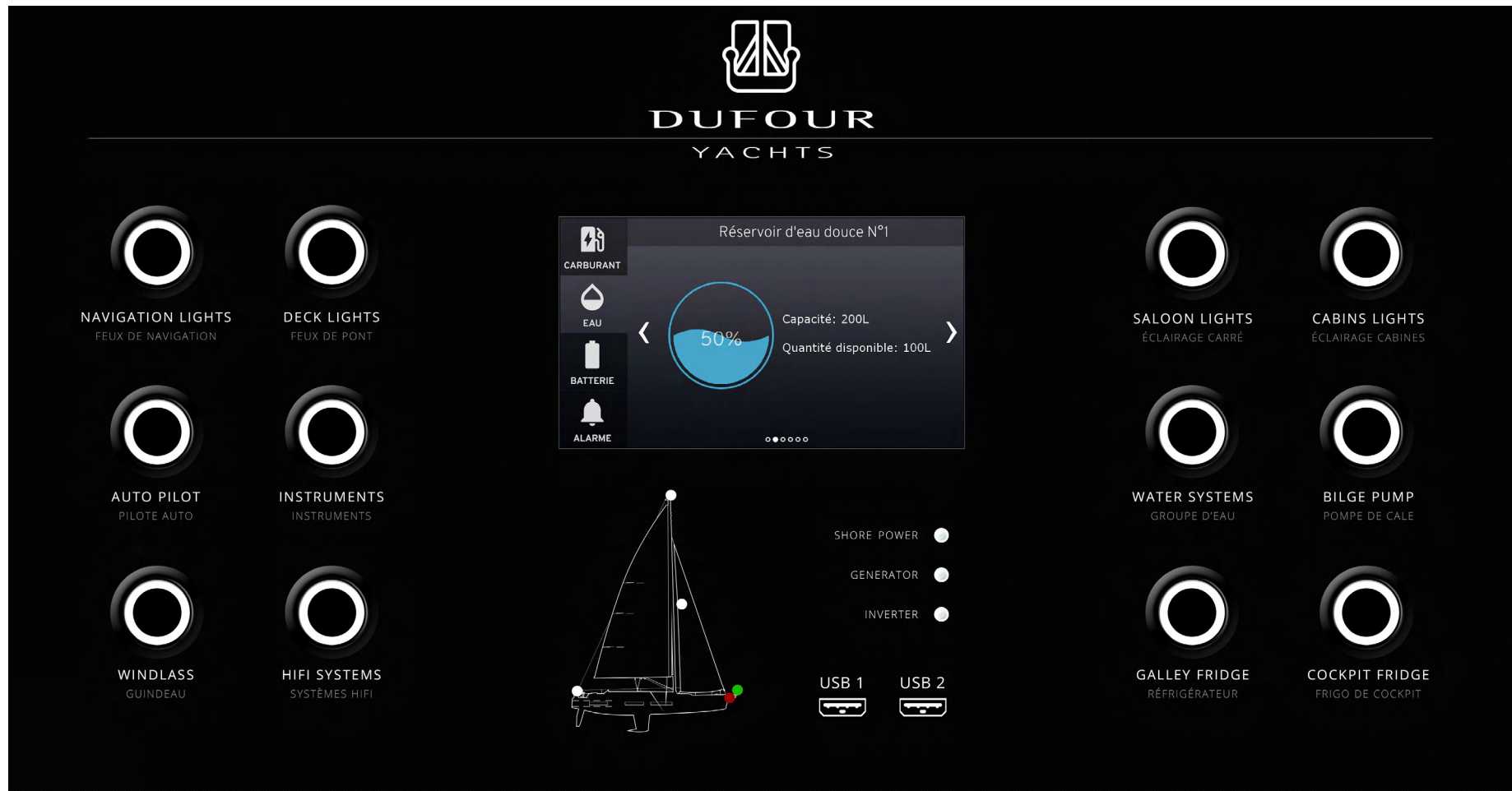
General specifications

| | |
|------------------------|----------------------|
| Architect | Felci Yacht Design |
| LOA | 13,24 m |
| Hull lenght | 12,50 m |
| Waterline lenght | 11,69 m |
| Beam | 4,30 m |
| Draft | 2,10 m (1,75 m opt.) |
| Displacement | 9500 kg |
| Engine | 50 cv (60 cv opt.) |
| Fuel capacity | 200 L |
| Water capacity | 380 L |
| Boiler capacity | 40 L |
| Total sail area upwind | 92 m ² |
| Main sail | 52 m ² |
| Genoa | 40 m ² |

**Innovation
technology**

Electric panel Grand Large 3.0

The new Dufour electric panel establishes an important innovation to be integrated on all Dufour Yachts ranges. Developed as the response to the growing demand for connectivity, this magnificent object allows full management of the on-board environment, as well as monitoring of information. The screen offers clear and reliable indication of all batteries voltage, water and fuel tanks and additional features such as temperature, and power source indicators.



Electric panel Grand Large 3.0

Composition :

- > 12x commands
- > 1x screen LCD 16/9
- > 2x USB 2,5A
- > 3x led presence

Simplification of controls :

-> families of functions are linked on a unique control in order to simplify equipment management

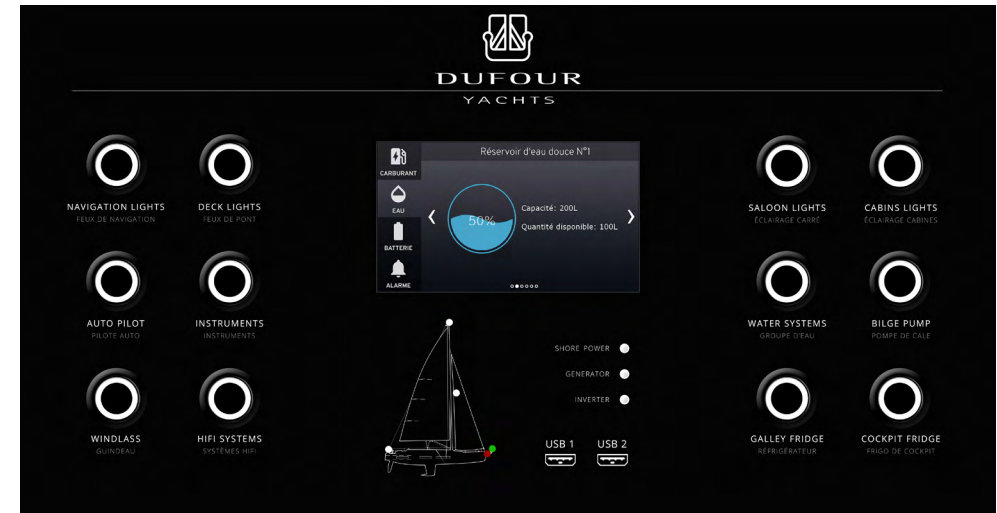
(ex : *WATER SYSTEM* activates water pressure + shower pumps)

Complete monitoring :

-> the central screen monitors the status of all equipment on board, especially the voltage of each battery and the level of each tank. The optimized software ensures the reliability of each information with the programming of compensation ratios.

The advantages of digital in analog environment :

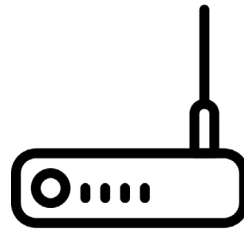
-> due to the importance of security onboard, we have chosen to keep an analog remote environment. At the back of the panel each function is coupled with a by-pass to switch back on a classic system when needed. In addition, the whole system is equipped with re-armable fuses.



Dufour Connect : the connect boat solution available on Community Service

The new electric panel technology is the heart module for new remote applications and services, and especially distant monitoring. With the Dufour Connect module, soon available on the Dufour Community Service, owners have access to the data of their boat in real-time and are immediately notified of any event by email and phone.

Tableau électrique avec module GSM intégré



Compte Owner
Community Service



**Various upgrades
D390 et D430**

Exterior

Bimini :

-> led included in bimini option

Interior

Water boiler

-> capacity now doubled from 20L to 40L

**New available
options**

Permateek

A new synthetic teak option is now available on the whole Dufour Grand Large range starting from September 2018. With the advantages of its real aesthetic effect and its lifetime, Permateek is considered the reference in next synthetic teak generation.

The product is available in two colours, with black or grey stripes. Wooden frames are always included.



Hull wrapping

Wrapping option will be included in boat configuration. Selected colours are *Night Blue* and *Light Perla Grey*.





DUFOUR

YACHTS

Thank you